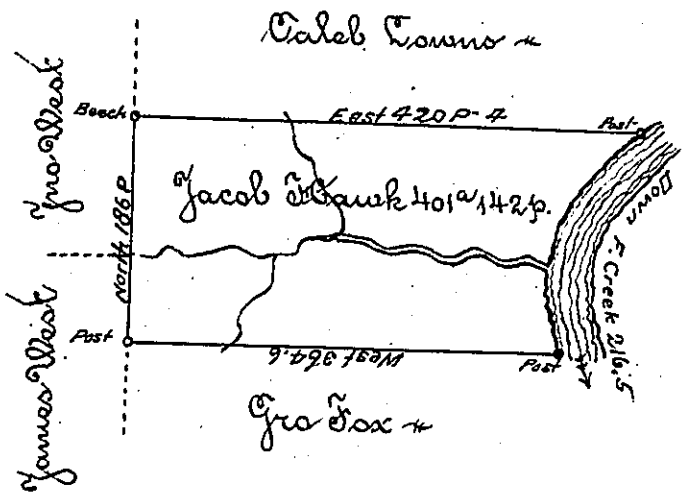


River Courses
 S 47 1/4 W 90
 S 10 W 22
 S 8 W 104.8
 216.8 Pr



Situate on the west side of French Creek in Allegheny County containing 401 1/2 142 perches and allowance of six per cent for roads &c surveyed the 6th Day of October 1894 in pursuance of his improvement Dated the 10th Day of April 1893

To Danl Broadhead Esq }
 Surveyor General }

Wm Power Dy Sr

IN TESTIMONY that the above is a copy of the original remaining on file in the Department of Internal Affairs of Pennsylvania, made conformably to an Act of Assembly approved the 16th day of February, 1833, I have hereunto set my Hand and caused the Seal of said Department to be affixed at Harrisburg, this

Twentyeth day of December 1894.

Secretary of Internal Affairs.